

FOR LEASE

2940 S. Minneapolis | Wichita, KS 67216
Warehouse, Distribution, or Industrial Facility

FOR MORE INFORMATION, CONTACT CHRISTIAN M. MADSEN

Mobile: 316-293-3734
cmadsen@wamllc.com



DETAILS

AVAILABLE SPACE

29,340 square feet

LOT SIZE

84,289 square feet

BUILDING SQUARE FOOTAGE

Warehouse – 20,000 square feet
Office – 9,340 square feet

ZONING

Limited Industrial

PARKING

57 spaces, 1 ADA

CEILING HEIGHT

Approximately 18 feet in warehouse

FLOORS

6-inch reinforced concrete in warehouse
Vinyl plank and ceramic tile in offices

LIGHTING

T8 Fluorescent in offices
T5 Florescent in warehouse
LED Exterior

LOCATION

Convenient access to I-135,
US-81, K-15 in South Wichita.

DOCK DOORS

3 – 8' x 9' OH doors w/ docks
1 – OH door w/ concrete loading dock
2 – 10' x 10' OH doors w/ concrete ramps

ROOF TYPE

Built up roof with gravel

HEATING & AIR CONDITIONING

Warehouse – 4 -RTU's – heat & A/C
Office – 2 Split unit heat & AC

POWER

240V 3-phase 800 Amp

WET SPRINKLED

EXTERIOR DETAILS

Red brick and concrete block construction. Asphalt paving with a fence on the north side and a concrete ramp on the south side.

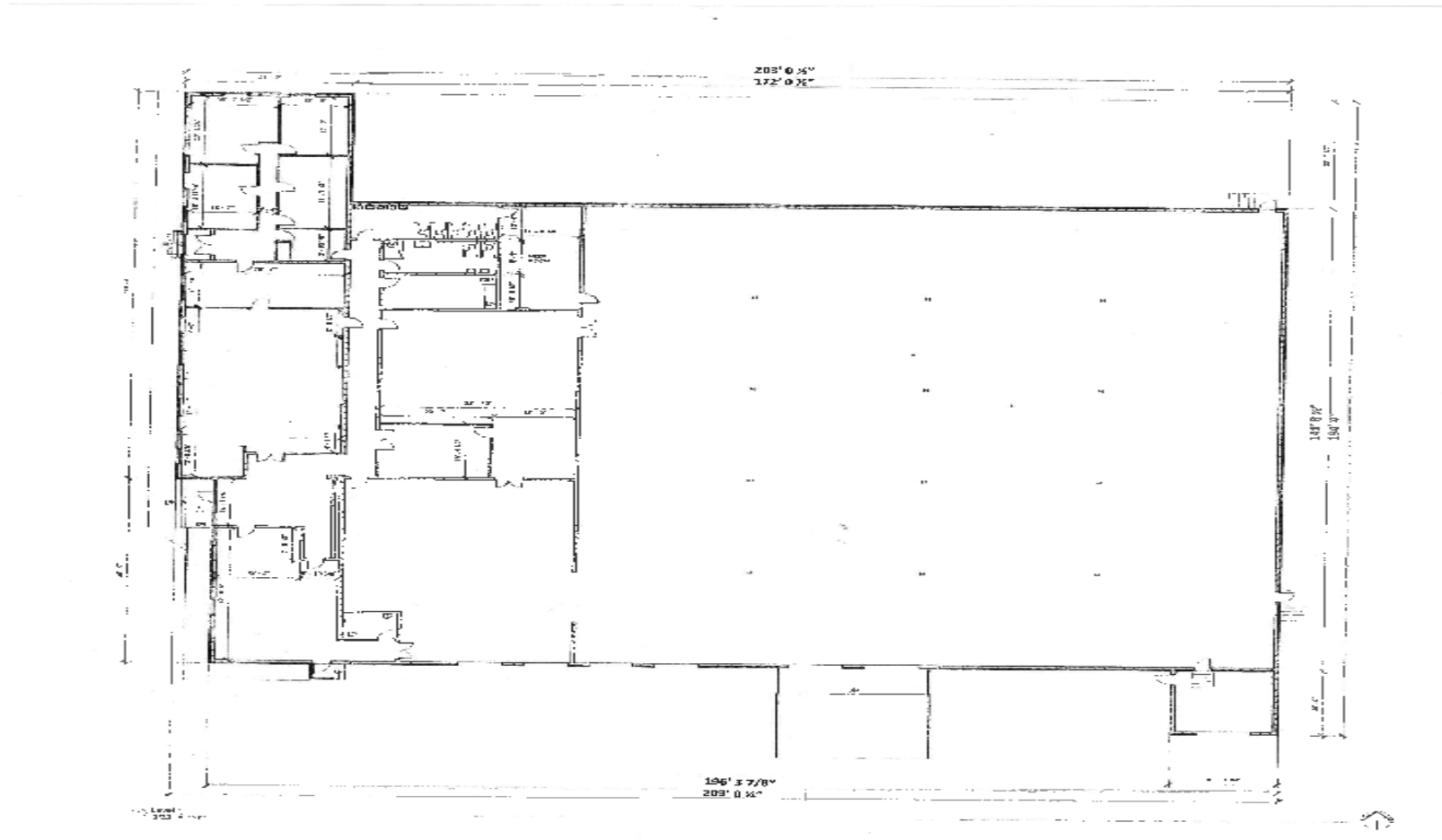


WAMLLC.COM | 316.264.8394 | 1223 N ROCK ROAD | STE E200 | WICHITA, KS 67206

FOR LEASE

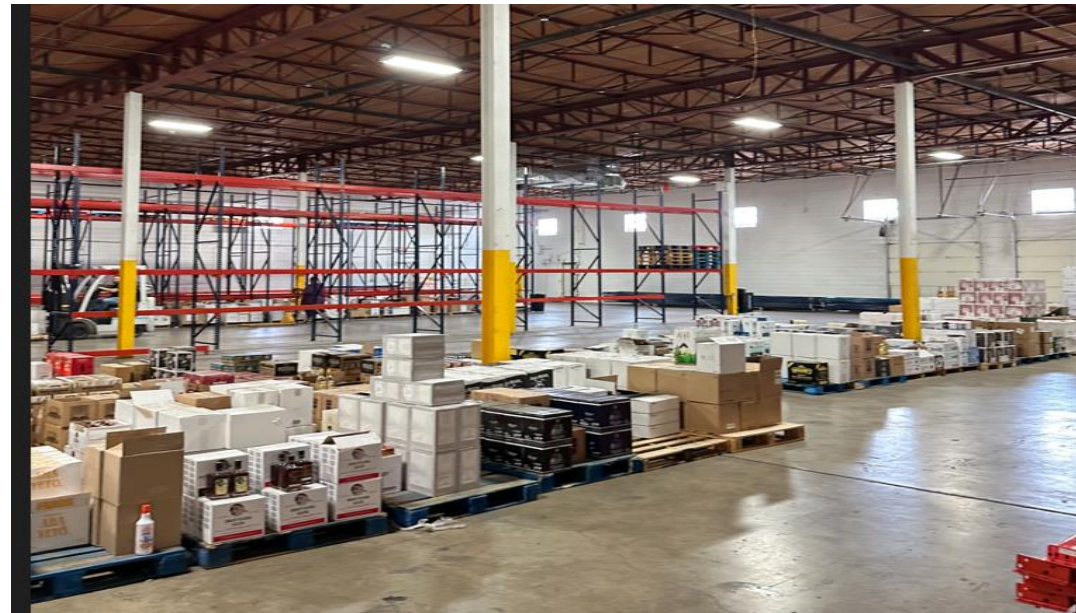
2940 S. Minneapolis | Wichita, KS 67216
Warehouse, Distribution, or Industrial Facility

FLOOR PLAN



FOR LEASE

2940 S. Minneapolis | Wichita, KS 67216
Warehouse, Distribution or Industrial Facility

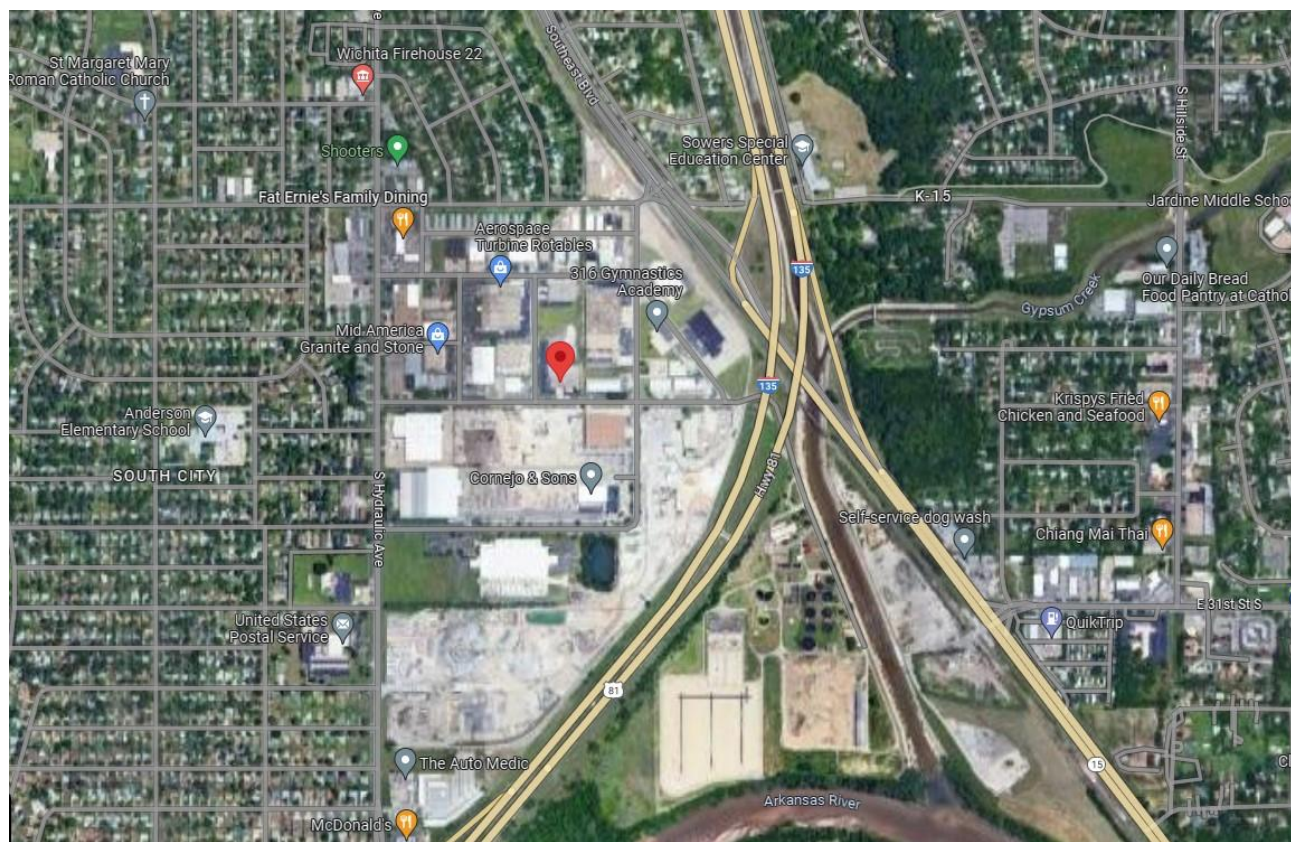


WAMLLC.COM | 316.264.8394 | 1223 N ROCK ROAD | STE E200 | WICHITA, KS 67206

FOR LEASE

2940 S. Minneapolis | Wichita, KS 67216
Warehouse, Distribution, or Industrial Facility

Aerial



WAMLLC.COM | 316.264.8394 | 1223 N ROCK ROAD | STE E200 | WICHITA, KS 67206