

FOR LEASE

815 Osie Street | Wichita, KS 67211
Warehouse

FOR MORE INFORMATION, CONTACT

MARK MICHAELIS

Office: 316.264.1051 or
316.264.8394
Mobile: 316.641.2832
mark@wamcapitalcorp.com

CHRIS MADSEN

Office: 316.264.1051 or
316.264.8394
Mobile: 316.305.7209
cmadsen@wamcapitalcorp.com

DETAILS

BUILDING SIZE

30,000 square feet

LOT SIZE

90,000 square feet

ZONING

Limited Industrial

PARKING

Ample

CEILING HEIGHT

Approximately 19 feet

DOCK DOORS

4 docks in 815 E. Osie space

LEASE RATE

\$10,000/month plus utilities

ROOF TYPE

Modified bitumen over precast
concrete deck

HEATING & AIR CONDITIONING

Warehouse - Unit heaters
Office - Split unit heat & AC

FLOORS

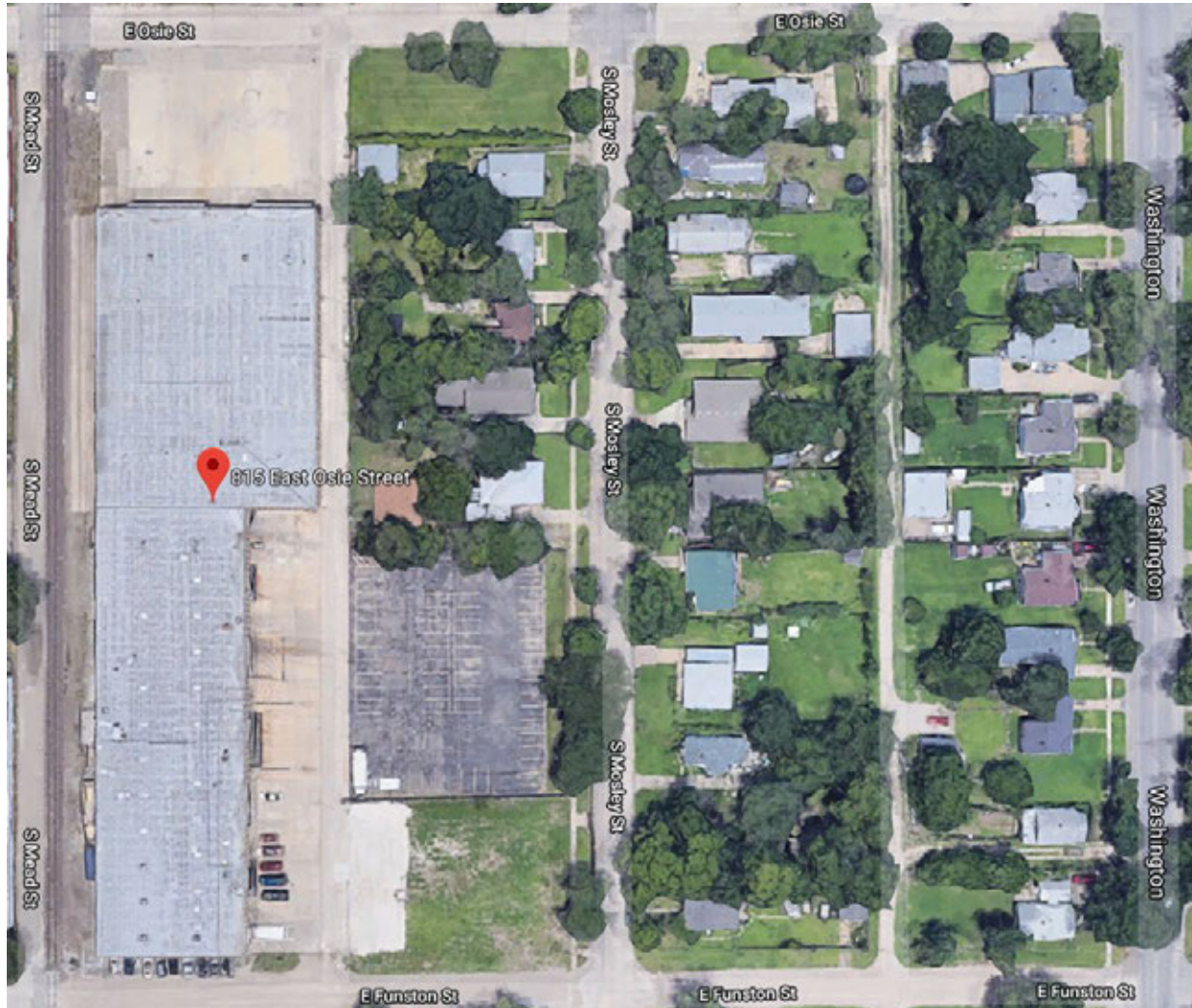
6-inch reinforced concrete in
warehouse, ceramic tile in offices



FOR LEASE

815 Osie Street | Wichita, KS 67211
Warehouse

AERIAL VIEW



FOR LEASE

815 Osie Street | Wichita, KS 67211
Warehouse

FLOOR PLAN

